



# P454, POLYESTER HEAVY CREPE ENVERSATIN

P454, POLYESTER HEAVY CREPE ENVERSATIN, 210G/M2, 150CM

[Read More](#)

**SKU:** P454  
**Price:** From: 8,26€/M  
**Stock:** instock

**Categories:** [Crepe](#)

**Weight:** 0.315 kg

**Dimensions:** Dimensions: 30x30x150 cm

**Category Color:** Beige, Black, Blue, Blush, Brown, Dark Grey, Fuchsia, Green, Grey, Light Blue, Light Green, Orange, Plum, Purple, Red, Rose, Sand, White

**Certification:** GB18-401, Reach

**Color:**

BEIGE 22 - 233 219 181, BEIGE 47 - 117 107 93, BEIGE 5 - 225 218 194, BLACK 8 - 52 51 49, BLUE 111 - 82 145 147, BLUE 132 - 49 96 108, BLUE 180 - 0 107 126, BLUE 21 - 115 123 184, BLUE 36 - 56 69 91, BLUE 60 - 57 74 127, BLUE 8 - 78 69 139, BLUSH 13 - 184 132 100, BROWN 144 - 139 90-63, BROWN 83 - 140 112 96, DARK GREY 29 - 107 99 108, FUCHSIA 104 - 163 73 124, FUCHSIA 106 - 140 42 55, FUCHSIA 12 - 193 28 85, FUCHSIA 26 - 232 90 135, FUCHSIA 68 - 211 145 182, FUCHSIA 69 - 221 138 197, GREEN 136 - 0 163 119, GREEN 196 - 98 91 64, GREEN 75 - 56 81 70, GREEN 80 - 24 93 77, GREY 73 - 148 143 147, LIGHT BLUE 162 - 152 191 203, LIGHT BLUE 75 - 83 182 210, LIGHT GREEN 113 - 123 210 73, LIGHT GREEN 23 - 66 183 167, LIGHT GREEN 90 - 122 178 128, ORANGE 123 - 244 123 110, PLUM 96 - 108 52 82, PURPLE 115 - 111 85 150, PURPLE 122 - 109 87 162, RED 19 - 202 51 71, RED 45 - 180 46 71, RED 60 - 211 51 96, RED 72 - 244 87 32, ROSE 34 - 207 152 133, ROSE 87 - 217 166 166, SAND 2 - 194 170 127, SAND 45 - 246 205 76, SAND 46 - 211 146 55, RANDOM COLOR, WHITE 16 - 244 247 255

**Construction:** Crepe

**Fiber:** Polyester

**Origin:** Extra CEE

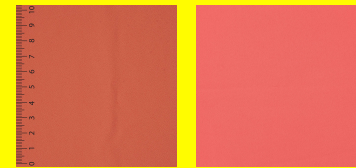
**Price Per Metre:** 8.26

**Purpose:** Children, Wedding and Ceremony, Woman

**Composition:** 100% POLYESTER

**By type:** CHILDREN, COLOR OF THE YEAR PEACH, WEDDING AND CEREMONY

**Format:** Cut 10M, Cut 5M, Roll 50M, Sample



## Product Description



Hand wash



do not  
bleach



Do not tumble dry

P454, POLYESTER HEAVY CREPE ENVERSATIN, 210G/M2, 150CM



Low temperature



Dryclean